

Office Pro® Series Specifications

MOVINCOOL
THE #1 SPOT COOLING SOLUTION



MOVINCOOL TECHNICAL SPECIFICATIONS

PC7

Office Pro® 12

Office Pro® 18

Office Pro® 24**

Office Pro® 36**

Office Pro® 60**

Office Pro® 63

Suggested List Price		\$ 595	\$ 3,655	\$ 4,065	\$ 4,885	\$ 6,995	\$ 11,145	\$ 12,495
Electronic Features	Control Panel	Programmable	Programmable	Programmable	Programmable	Programmable	Programmable	Programmable
	Thermostat Control	Electronic	Electronic	Electronic	Electronic	Electronic	Electronic	Electronic
Cooling Capacity	Rating conditions: 95°F at 60% RH	7,000 Btu/h ¹	12,000 Btu/h	16,800 Btu/h	24,000 Btu/h	36,000 Btu/h	60,000 Btu/h	60,000 Btu/h
Electrical Characteristics	Voltage Requirement	1 Phase, 115V	1 Phase, 115V	1 Phase, 115V	1Phase, 208/230V	1Phase, 208/230V	1Phase, 208/230V	3Phase, 460V
	Total Power Consumption	1.12 kW	1.3 kW	1.7 kW	2.9 kW	4.3 kW	6.6 kW	6.6 kW
	Current Consumption	9.7 amps	11.9 amps	15.6 amps	13.2 amps	19.6 amps	29 amps	9.5 amps
	Recommended Fuse Size	15 amps	15 amps	20 amps	20 amps	30 amps	50 amps	20 amps
	NEMA Plug Configuration	5-15	5-15	5-20	6-20	6-30	6-50	L16-20
	Min. - Max. Voltage	105-125	105-125	105-125	198-250	198-250	198-250	440-480
Fans	Motor Output - high/low	0.04/0.03 kW	0.14/0.08 kW	0.24/0.17 kW	0.57/0.40 kW	0.21/0.13 kW Evap. 0.33/0.12 kW Cond.	0.5/0.33 kW Evap. 1.2/0.93 kW Cond.	0.5/0.33 kW Evap. 1.2/0.93 kW Cond.
	Evaporator	Fan Type	Centrifugal	Centrifugal	Centrifugal	Centrifugal	Centrifugal	Centrifugal
	Max. Air Flow - high/low	176/159 CFM	410/380 CFM	540/500 CFM	630/545 CFM	990/825 CFM	1940/1770 CFM	1940/1770 CFM
	Max. External Static Pressure	N/A	0.31 IWG	0.31 IWG	0.5 IWG	0.6 IWG	0.9 IWG	0.9 IWG
Condenser	Fan Type	Centrifugal	Centrifugal	Centrifugal	Centrifugal	Centrifugal	Centrifugal	Centrifugal
	Max. Air Flow - high/low	177/155 CFM	820/715 CFM	770/710 CFM	870/760 CFM	1490/1060 CFM	2830/2650 CFM	2830/2650 CFM
	Max. External Static Pressure	N/A	0.16 IWG	0.23 IWG	0.16 IWG	0.5 IWG	0.85 IWG	0.85 IWG
Compressor	Type	Hermetic Rotary	Hermetic Rotary	Hermetic Rotary	Hermetic Rotary	Hermetic Scroll	Hermetic Scroll	Hermetic Scroll
	Output	0.8 kW	0.9 kW	1.16 kW	1.8 kW	2.3 kW	3.9 kW	3.3 kW
Refrigerant *	Type	R22/R-410A [†]	R-410A	R-410A	R-410A	R-410A	R-410A	R-410A
Dimensions	W x D x H	15 x 17 x 33 in	21 x 27 x 44 in	21 x 27 x 44 in	21 x 27 x 49 in	30 x 44 x 52 in	30 x 52 x 64 in	30 x 52 x 64 in
Net Weight/Shipping Weight		77/86 lb	151/182 lb	170/201 lb	216/253 lb	440/483 lb	623/732 lb	705/835 lb
Power Cord	Gauge	16 AWG (3-core)	14 AWG (3-core)	12 AWG (3-core)	12 AWG (3-core)	10 AWG (3-core)	6 AWG (3-core)	12 AWG (4-core)
	Length	6 ft	10 ft	10 ft	6 ft	6 ft	6 ft	6 ft
Condensate Tank Capacity		1.05 gal	5 gal	5 gal	5 gal	2 @ 5 gal	Auto Pump Included	Auto Pump Included
Operating Conditions	Min. - Max. (@ 50% RH)	66° - 86°F	65° - 95°F	65° - 95°F	65° - 95°F	65° - 95°F	65° - 105°F	65° - 105°F
Max. Equivalent Duct Length	Per Cold Duct Hose	N/A	30 ft	25 ft	50 ft	40 ft	40 ft	40 ft
	Hot Duct Hose	6 ft	60 ft	100 ft	45 ft	60 ft	100 ft	100 ft
Max. Sound Level	With Condenser Duct - high/low	53/52 dB(A)	52/50 dB(A)	61/59 dB(A)	63/61 dB(A)	65/62 dB(A)	69/67 dB(A)	69/67 dB(A)
	Without Condenser Duct - high/low	NA/NA	55/53 dB(A)	62/60 dB(A)	65/63 dB(A)	67/66 dB(A)	71/69 dB(A)	71/69 dB(A)

All specifications subject to change without notice. Standard warranty includes 12 months on entire unit and 36 months on the compressor (except PC7). Visit www.movincool.com/reg for details on MovinCool's industry-best free Extended Warranty Program which includes both parts and labor on units. All models feature compressor overload relay and fan motor protection. All models also feature compressor short-cycle protection, return air thermostat, automatic restart and accommodate a condensate pump kit (except PC7). All models are 50 Hertz (Hz) compatible with a slight performance decrease from specifications listed above.

¹ Rating Conditions: Evaporator: 80 °F at 50% RH / Condenser: 95 °F

*Check manufacturer or reseller for refrigerant type

**Specification information shown with 230V

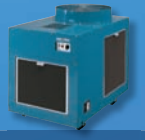
For more information visit www.movincool.com



DENSO SALES CALIFORNIA, INC.
REGISTERED TO ISO 9002
FILE NO. A5537

Classic & Classic Plus Series Specifications

MOVINCOOL
THE #1 SPOT COOLING SOLUTION



MOVINCOOL TECHNICAL SPECIFICATIONS

Classic 10

Classic Plus 14

Classic 18**

Classic Plus 26**

Classic 40

Classic 60

Suggested List Price		\$ 2,795	\$ 3,335	\$ 3,935	\$ 4,445	\$ 6,395	\$ 9,845
Electronic Features	Control Panel	Digital	Programmable	Digital	Programmable	Digital	Digital
	Thermostat Control	Electronic	Electronic	Electronic	Electronic	Electronic	Electronic
Cooling Capacity	Rating conditions: 95°F at 60% RH	10,000 Btu/h	13,200 Btu/h	18,000 Btu/h	24,000 Btu/h	39,000 Btu/h	60,000 Btu/h
Electrical Characteristics	Voltage Requirement	1 Phase, 115V	1 Phase, 115V	1 Phase, 208/230V	1 Phase, 208/230V	3 Phase, 220V	3 Phase, 460V
	Total Power Consumption	1.1 kW	1.3 kW	1.9 kW	3.1 kW	4.2 kW	5.9 kW
	Current Consumption	10 amps	11.9 amps	8.8 amps	15.6/14.0 amps	14 amps	8.8 amps
	Recommended Fuse Size	15 amps	15 amps	15 amps	20 amps	25 amps	20 amps
	NEMA Plug Configuration	5-15	5-15	6-15	6-20	L15-30	N/A
	Min. - Max. Voltage	105-125	105-125	198-250	198-250	198 - 250	440-480
Fans	Motor Output - high/low	0.14 kW	0.24/0.19 kW	0.35 kW	0.55/0.38 kW	0.75 kW Evap. 0.40 kW Cond.	0.75 kW Evap. 0.40 kW Cond.
	Evaporator						
Evaporator	Fan Type	Centrifugal	Centrifugal	Centrifugal	Centrifugal	Centrifugal	Centrifugal
	Max. Air Flow - high/low	265 CFM	440/380 CFM	530 CFM	708/600 CFM	1060 CFM	1580 CFM
	Max. External Static Pressure	0.33 IWG	0.31 IWG	0.48 IWG	0.54 IWG	1.72 IWG	1.35 IWG
Condenser	Fan Type	Centrifugal	Centrifugal	Centrifugal	Centrifugal	Propeller	Propeller
	Max. Air Flow - high/low	740 CFM	880/760 CFM	1180 CFM	1680/1460 CFM	2650 CFM	3800 CFM
	Max. External Static Pressure	0.13 IWG	0.19 IWG	0.25 IWG	0.25 IWG	0.05 IWG	0.05 IWG
Compressor	Type	Hermetic Rotary	Hermetic Rotary	Hermetic Scroll	Hermetic Scroll	Hermetic Scroll	Hermetic Scroll
	Output	0.6 kW	0.9 kW	1.1 kW	1.6 kW	2.3 kW	3.89 kW
Refrigerant	Type	R-22/R-410A*	R-410A	R-410A	R-22/R-410A*	R-410A	R-410A
Dimensions	W x D x H	19 x 26 x 41 in	19 x 26 x 41 in	19 x 26 x 41 in	19 x 29 x 47 in	26 x 43 x 38 in	32 x 49 x 42 in
Net Weight/Shipping Weight		145/183 lb	166/197 lb	164/205 lb	235/265 lb	344/396 lb	474/566 lb
Power Cord	Gauge	14 AWG (3-core)	14 AWG (3-core)	14 AWG (3-core)	12 AWG (3-core)	12 AWG (4-core)	N/A
	Length	10 ft	10 ft	6 ft	6 ft	6 ft	N/A
Condensate Tank Capacity		5 gal	5 gal	5 gal	5 gal	2@ 5 gal (optional)	N/A
Operating Conditions	Min. - Max. (@ 50% RH)	70° - 105°F	70° - 113°F	70° - 105°F	70° - 113°F	75° - 115°F	75° - 115°F
Max. Equivalent Duct Length	Per Cold Duct Hose	40 ft	30 ft	50 ft	60 ft	Varies	Varies
	Hot Duct Hose	60 ft	60 ft	60 ft	45 ft	40 ft	40 ft
Max. Sound Level	With Condenser Duct - high/low	55 dB(A)	57/55 dB(A)	63 dB(A)	66/64 dB(A)	N/A	N/A
	Without Condenser Duct - high/low	58 dB(A)	60/58 dB(A)	67 dB(A)	69/67 dB(A)	72 dB(A)	72 dB(A)

All specifications subject to change without notice. Standard warranty includes 12 months on entire unit and 36 months on the compressor (except PC7). Visit www.movincool.com/reg for details on MovinCool's industry-best free Extended Warranty Program which includes both parts and labor on units. All models feature compressor overload relay and fan motor protection. All models also feature compressor short-cycle protection, return air thermostat, automatic restart and accommodate a condensate pump kit (except PC7). All models are 50 Hertz (Hz) compatible with a slight performance decrease from specifications listed above.

*Check manufacturer or reseller for refrigerant type

**Specification information shown with 230V

For more information visit www.movincool.com



DENSO SALES CALIFORNIA, INC.
REGISTERED TO ISO 9002
FILE NO. A5537

CM Series Specifications

MOVINCOOL
THE #1 SPOT COOLING SOLUTION



MOVINCOOL TECHNICAL SPECIFICATIONS		CM12	CM25 ^{1,2}
Suggested List Price		\$ 2,895	\$ 6,995
Electronic Features	Operation	Millivolt Thermostat (Not Included)	Wall Mounted Controller with LCD Display
	Control	Electronic	Electronic
Electrical Characteristics	Voltage Requirement	115V, 1 Phase, 60 Hz	208/230V, 1 Phase, 60 Hz
	Min. - Max. Voltage	105-125	198-253
	Recommended Fuse Size	15 amps	20 amps
Cooling Capacity and Power Consumption			
Evaporator: 80 °F, 50% RH /Condenser: 95 °F, 50% RH	Total Cooling Capacity	10,500 Btu/h ¹	25,000 Btu/h ²
	Sensible Cooling Capacity	7,200 Btu/h ¹	18,000 Btu/h ²
	Power Consumption	1.23 kW ¹	2.90 kW ²
	Current Consumption	11.9 amps ¹	12.6 amps ²
Evaporator: 72 °F, 50% RH /Condenser: 95 °F, 50% RH	Total Cooling Capacity	9,200 Btu/h ¹	25,000 Btu/h ²
	Sensible Cooling Capacity	6,900 Btu/h ¹	18,900 Btu/h ²
	Power Consumption	1.23 kW ¹	3.20 kW ²
	Current Consumption	11 amps ¹	15 amps ²
Evaporator	Fan Type	Centrifugal	Centrifugal
	Max. Air Flow - high/low	324/228 CFM ¹	950/800 CFM ²
	Max. External Static Pressure	0.16 IWG	0.6 IWG
Condenser	Fan Type	Centrifugal	Centrifugal
	Max. Air Flow - high/low	700/370 CFM	1,600/1,300 CFM
	Max. External Static Pressure	0.12 IWG	0.5 IWG
Compressor	Type	Hermetic Rotary	Hermetic Swing Inverter
Refrigerant	Type	R22/R-410A [*]	R-410A
Dimensions	W x D x H (without flange)	30 x 20 x 15 in	53 x 32 x 20 in
	W x D x H (with flange)	35 x 23 x 15.5 in	57 x 36 x 20 in
Net Weight/Shipping Weight		128/141 lb	310/353 lb
Condensate Pump Capacity	Pump Rate	5 gal/h	5 gal/h
	Head	4 ft	4 ft
Operating Conditions	Evaporator	65° – 95°F, 50% RH	60°F - 95°F, 50% RH
	Condenser	65° – 113° F	50°F - 113°F
Max. Duct Length	Cold Duct Hose	20 ft ³	120 ft ³
	Hot Duct Hose	10 ft ³	90 ft ³
Max. Sound Level	Under ceiling tile with evaporator duct	52 dB(A)	55 dB(A)

¹Measured with two 6 ft ducts with one 90° bend each, supply grill and return grill with filter (0.16 IWG external static pressure) (ducts not included)

²Measured with two 20 ft ducts with one 90° bend each, supply grill and return grill with filter (0.30 IWG external static pressure) (ducts not included)

³Confirm pressure drop of duct, grills and filter with manufactures specifications.

^{*}Check manufacturer or reseller for refrigerant type

^{**}Specification information shown with 230V

All specifications subject to change without notice. Standard warranty includes 12 months on entire unit and 36 months on the compressor (except PC7). Visit www.movincool.com/reg for details on MovinCool's industry-best free Extended Warranty Program which includes both parts and labor on units. All models feature compressor overload relay and fan motor protection. All models also feature compressor short-cycle protection, return air thermostat, automatic restart and accommodate a condensate pump kit (except PC7). All models are 50 Hertz (Hz) compatible with a slight performance decrease from specifications listed above (except CM25).

For more information visit www.movincool.com



DENSO SALES CALIFORNIA, INC.
REGISTERED TO ISO 9002
FILE NO. A5537